

SPECIAL NOTES

1. Fly ash and Fly based materials are to be used for construction.
2. There is not any water body (pond) in the plot.
3. Solar panel are provided at roof top for generation of energy of energy equivalent to 1% of the connected load.

PROJECT

REVISED PLAN PROPOSAL FOR B+G+11(BLOCKS 1,2,3), G+H(I/BLOCK 3,4,5) & G+H(II/BLOCK 4,5) STORED (143 MTS HEIGHT) RESIDENTIAL BUILDING UNDER MODA CHIPPA, J. NO. 35, R.S. / L.R. DARGO - 143, 144 (7/1) 145, 146, 147, 148, 149, 150, 151, 152, 153, 154, 155, 156, 157, 158, 159, 160, 161, 162, 163, 164 (P) PANKAJ VILLAGE, D.S. RAJAHATI, NORTH 24, BAGMANS, KOLKATA - 700135, SUPERSEEDING PREVIOUS MEMO NO. 8291/ MODA / BPS 04(S3)/2020. DATED- 02 / 08 / 21.

WINDOW SCHEDULE

NO.	WIDTH	HEIGHT	MATERIAL	REMARKS
W1	1500	1800	ALUM GLASS CASSET WINDOW	
W2	1500	1800	ALUM GLASS CASSET WINDOW	
W3	1500	1800	ALUM GLASS CASSET WINDOW	
W4	1500	1800	ALUM GLASS CASSET WINDOW	
W5	1500	1800	ALUM GLASS CASSET WINDOW	
W6	1500	1800	ALUM GLASS CASSET WINDOW	
W7	1500	1800	ALUM GLASS CASSET WINDOW	
W8	1500	1800	ALUM GLASS CASSET WINDOW	
W9	1500	1800	ALUM GLASS CASSET WINDOW	
W10	1500	1800	ALUM GLASS CASSET WINDOW	
W11	1500	1800	ALUM GLASS CASSET WINDOW	
W12	1500	1800	ALUM GLASS CASSET WINDOW	
W13	1500	1800	ALUM GLASS CASSET WINDOW	
W14	1500	1800	ALUM GLASS CASSET WINDOW	
W15	1500	1800	ALUM GLASS CASSET WINDOW	
W16	1500	1800	ALUM GLASS CASSET WINDOW	
W17	1500	1800	ALUM GLASS CASSET WINDOW	
W18	1500	1800	ALUM GLASS CASSET WINDOW	
W19	1500	1800	ALUM GLASS CASSET WINDOW	
W20	1500	1800	ALUM GLASS CASSET WINDOW	
W21	1500	1800	ALUM GLASS CASSET WINDOW	
W22	1500	1800	ALUM GLASS CASSET WINDOW	
W23	1500	1800	ALUM GLASS CASSET WINDOW	
W24	1500	1800	ALUM GLASS CASSET WINDOW	
W25	1500	1800	ALUM GLASS CASSET WINDOW	
W26	1500	1800	ALUM GLASS CASSET WINDOW	
W27	1500	1800	ALUM GLASS CASSET WINDOW	
W28	1500	1800	ALUM GLASS CASSET WINDOW	
W29	1500	1800	ALUM GLASS CASSET WINDOW	
W30	1500	1800	ALUM GLASS CASSET WINDOW	
W31	1500	1800	ALUM GLASS CASSET WINDOW	
W32	1500	1800	ALUM GLASS CASSET WINDOW	
W33	1500	1800	ALUM GLASS CASSET WINDOW	
W34	1500	1800	ALUM GLASS CASSET WINDOW	
W35	1500	1800	ALUM GLASS CASSET WINDOW	
W36	1500	1800	ALUM GLASS CASSET WINDOW	
W37	1500	1800	ALUM GLASS CASSET WINDOW	
W38	1500	1800	ALUM GLASS CASSET WINDOW	
W39	1500	1800	ALUM GLASS CASSET WINDOW	
W40	1500	1800	ALUM GLASS CASSET WINDOW	
W41	1500	1800	ALUM GLASS CASSET WINDOW	
W42	1500	1800	ALUM GLASS CASSET WINDOW	
W43	1500	1800	ALUM GLASS CASSET WINDOW	
W44	1500	1800	ALUM GLASS CASSET WINDOW	
W45	1500	1800	ALUM GLASS CASSET WINDOW	
W46	1500	1800	ALUM GLASS CASSET WINDOW	
W47	1500	1800	ALUM GLASS CASSET WINDOW	
W48	1500	1800	ALUM GLASS CASSET WINDOW	
W49	1500	1800	ALUM GLASS CASSET WINDOW	
W50	1500	1800	ALUM GLASS CASSET WINDOW	
W51	1500	1800	ALUM GLASS CASSET WINDOW	
W52	1500	1800	ALUM GLASS CASSET WINDOW	
W53	1500	1800	ALUM GLASS CASSET WINDOW	
W54	1500	1800	ALUM GLASS CASSET WINDOW	
W55	1500	1800	ALUM GLASS CASSET WINDOW	
W56	1500	1800	ALUM GLASS CASSET WINDOW	
W57	1500	1800	ALUM GLASS CASSET WINDOW	
W58	1500	1800	ALUM GLASS CASSET WINDOW	
W59	1500	1800	ALUM GLASS CASSET WINDOW	
W60	1500	1800	ALUM GLASS CASSET WINDOW	
W61	1500	1800	ALUM GLASS CASSET WINDOW	
W62	1500	1800	ALUM GLASS CASSET WINDOW	
W63	1500	1800	ALUM GLASS CASSET WINDOW	
W64	1500	1800	ALUM GLASS CASSET WINDOW	
W65	1500	1800	ALUM GLASS CASSET WINDOW	
W66	1500	1800	ALUM GLASS CASSET WINDOW	
W67	1500	1800	ALUM GLASS CASSET WINDOW	
W68	1500	1800	ALUM GLASS CASSET WINDOW	
W69	1500	1800	ALUM GLASS CASSET WINDOW	
W70	1500	1800	ALUM GLASS CASSET WINDOW	
W71	1500	1800	ALUM GLASS CASSET WINDOW	
W72	1500	1800	ALUM GLASS CASSET WINDOW	
W73	1500	1800	ALUM GLASS CASSET WINDOW	
W74	1500	1800	ALUM GLASS CASSET WINDOW	
W75	1500	1800	ALUM GLASS CASSET WINDOW	
W76	1500	1800	ALUM GLASS CASSET WINDOW	
W77	1500	1800	ALUM GLASS CASSET WINDOW	
W78	1500	1800	ALUM GLASS CASSET WINDOW	
W79	1500	1800	ALUM GLASS CASSET WINDOW	
W80	1500	1800	ALUM GLASS CASSET WINDOW	
W81	1500	1800	ALUM GLASS CASSET WINDOW	
W82	1500	1800	ALUM GLASS CASSET WINDOW	
W83	1500	1800	ALUM GLASS CASSET WINDOW	
W84	1500	1800	ALUM GLASS CASSET WINDOW	
W85	1500	1800	ALUM GLASS CASSET WINDOW	
W86	1500	1800	ALUM GLASS CASSET WINDOW	
W87	1500	1800	ALUM GLASS CASSET WINDOW	
W88	1500	1800	ALUM GLASS CASSET WINDOW	
W89	1500	1800	ALUM GLASS CASSET WINDOW	
W90	1500	1800	ALUM GLASS CASSET WINDOW	
W91	1500	1800	ALUM GLASS CASSET WINDOW	
W92	1500	1800	ALUM GLASS CASSET WINDOW	
W93	1500	1800	ALUM GLASS CASSET WINDOW	
W94	1500	1800	ALUM GLASS CASSET WINDOW	
W95	1500	1800	ALUM GLASS CASSET WINDOW	
W96	1500	1800	ALUM GLASS CASSET WINDOW	
W97	1500	1800	ALUM GLASS CASSET WINDOW	
W98	1500	1800	ALUM GLASS CASSET WINDOW	
W99	1500	1800	ALUM GLASS CASSET WINDOW	
W100	1500	1800	ALUM GLASS CASSET WINDOW	

NOTES

1. All dimensions are in mm.
2. Discrepancies in dimensions or otherwise should be brought to the notice of the architect.
3. This drawing supersedes earlier drawings.
4. All brickwork plastering inside or outside are in the ratio of 1:6 & 1:4 respectively.
5. This drawing should be read only and not to be scaled.
6. All civil works are as per IS 456 and all reinforcement as per IS 1176.
7. All works should be done as per specifications mentioned in the structural drawings.
8. All precautionary measures shall be taken at the time of construction of semi foundation.
9. Depth of water reservoir shall not be more than the depth of main column foundation.
10. Foundation walls are 200, 180 tbc, and all internal walls are 100 tbc, unless otherwise specified.
11. This drawing should be used for Section Purpose only.
12. The top slab of the U.C.R. is structurally safe for taking load of heavy vehicles like fire tender.

UNDERTAKING BY THE OWNER

1. I/We confirm that the building operation to be undertaken shall be strictly in accordance with the Act and the rules and regulations made thereunder.
2. I/We confirm that no building materials shall be deposited in any street or public place.
3. I/We confirm that no work shall be carried out in any street or public place, as shown in building plan, as land appurtenance to the proposed building.

SIGNATURE OF OWNER / DEVELOPER (CONSTITUTED ATTORNEY)
 [Signature]
 Kolkata, West Bengal 700033

CERTIFICATE OF THE ARCHITECT:
 I hereby certify that the drawings of the project prepared by me, comply with the New Town Kolkata Building Rule 2014. I also certify that the plans and drawings prepared by me, comply with all Provision regarding the Fire and Safety measures as per the National Building Code of India. I also certify that the information furnished by me or my location of provision of these rules or the prevailing National Building Code is found in any of the documents mentioned in the list of documents submitted to the Sanctioning Authority for obtaining sanction.

DECLARATION OF GEO-TECHNICAL ENGINEER
 It is certified that the computation of the foundation is done in accordance with the provisions of the Indian Standard IS 800 for retaining the bearing capacity of the soil on which foundation of structure will be constructed. The bearing capacity of the soil is assumed to be 100 kN/m². The foundation is extended up to appropriate depth that have been proposed in the Geo-Technical report.

CERTIFICATE OF THE CIVIL/STRUCTURAL ENGINEER:
 Certified that the structural drawing and design of both the foundation and the superstructure of the building has been made considering the Soil and Foundation bearing capacity as per the Indian Standard IS 800 and IS 456. The proposed structure as per the Bureau of Indian Standard and National Building Code of India is safe to be constructed in all respect and these provisions shall be adhered to during the construction.

SIGNATURE OF ARCHITECT:
 [Signature]
 SANJAY P. BANERJEE
 ARCHITECT
 25-A, DR. SANKU BANERJEE ROAD, KOLKATA-700029
 TEL: 9830024454
 WEBSITE: www.espaceindia.com

SIGNATURE OF GEO-TECHNICAL ENGINEER:
 [Signature]
 Geotechnical Engineer

SIGNATURE OF CIVIL/STRUCTURAL ENGINEER:
 [Signature]
 Civil/Structural Engineer

ARCHITECTURAL DRAWING

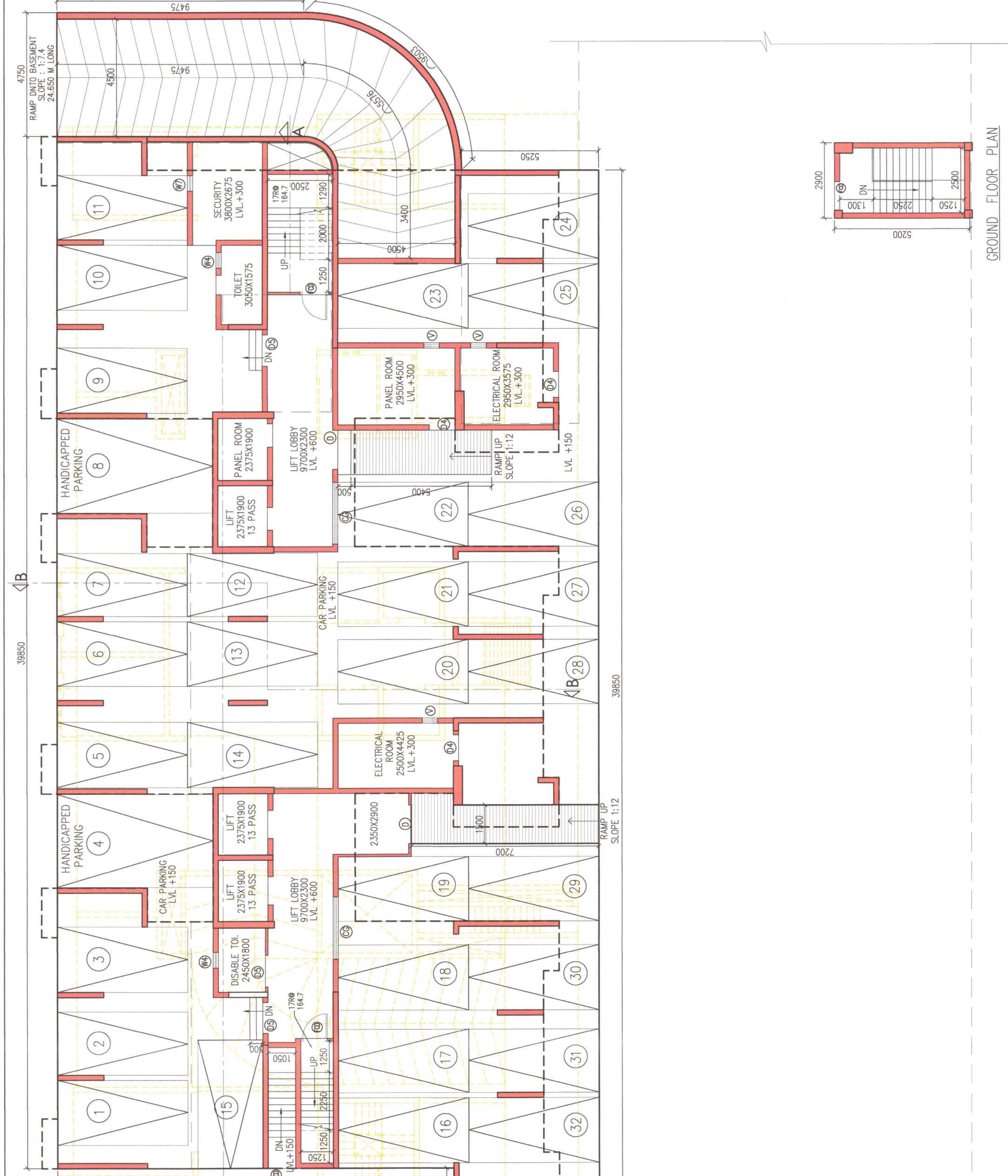
BLOCK 2 B+G+12

FLOOR PLANS:
 SECTION A-A
 BASEMENT FLOOR PLAN
 & SECTION A-A-B

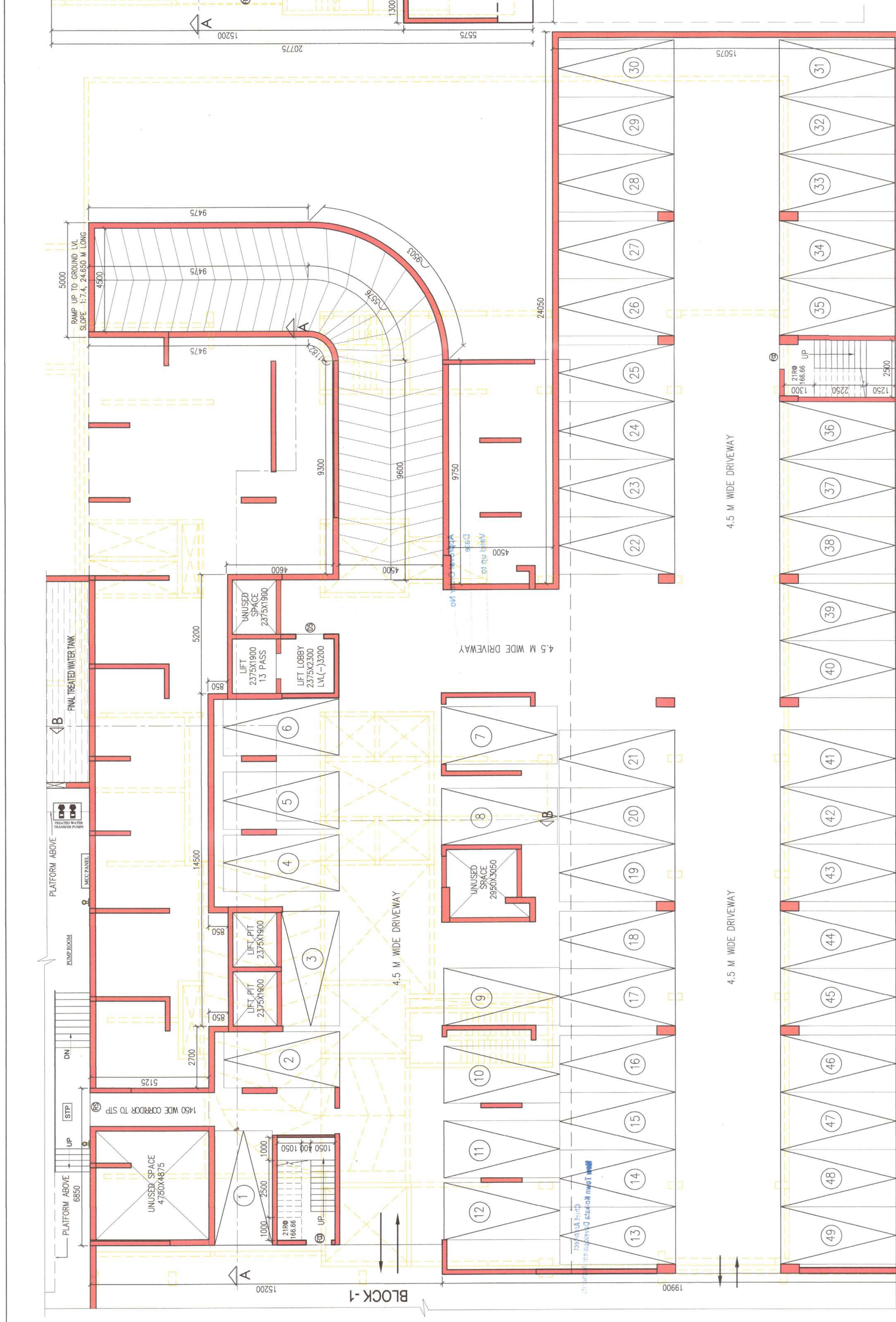
SCALE: DRAWING NO. ARCH/SANC/02/B

DATE: _____

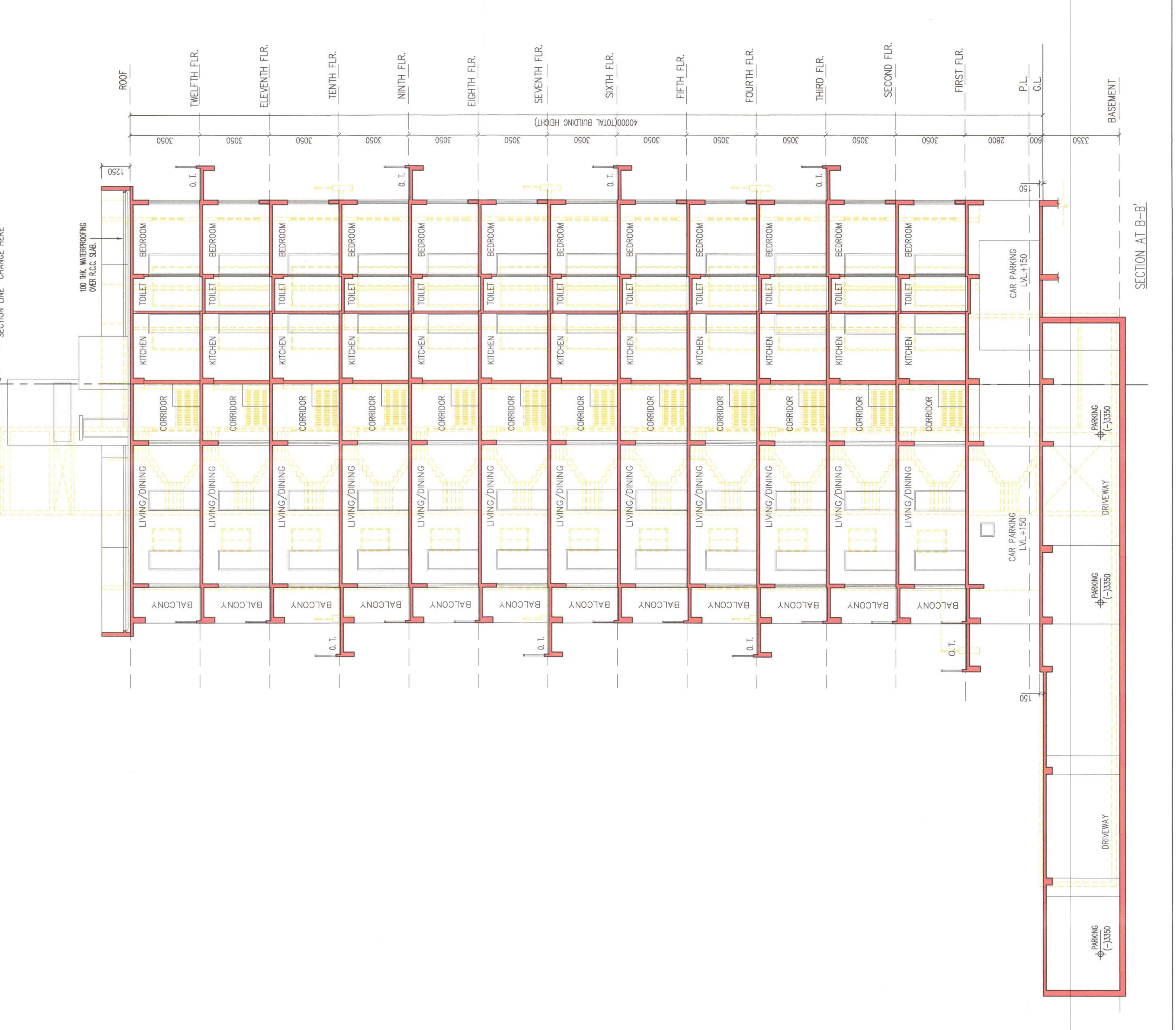
BLOCK 2 B+G+12



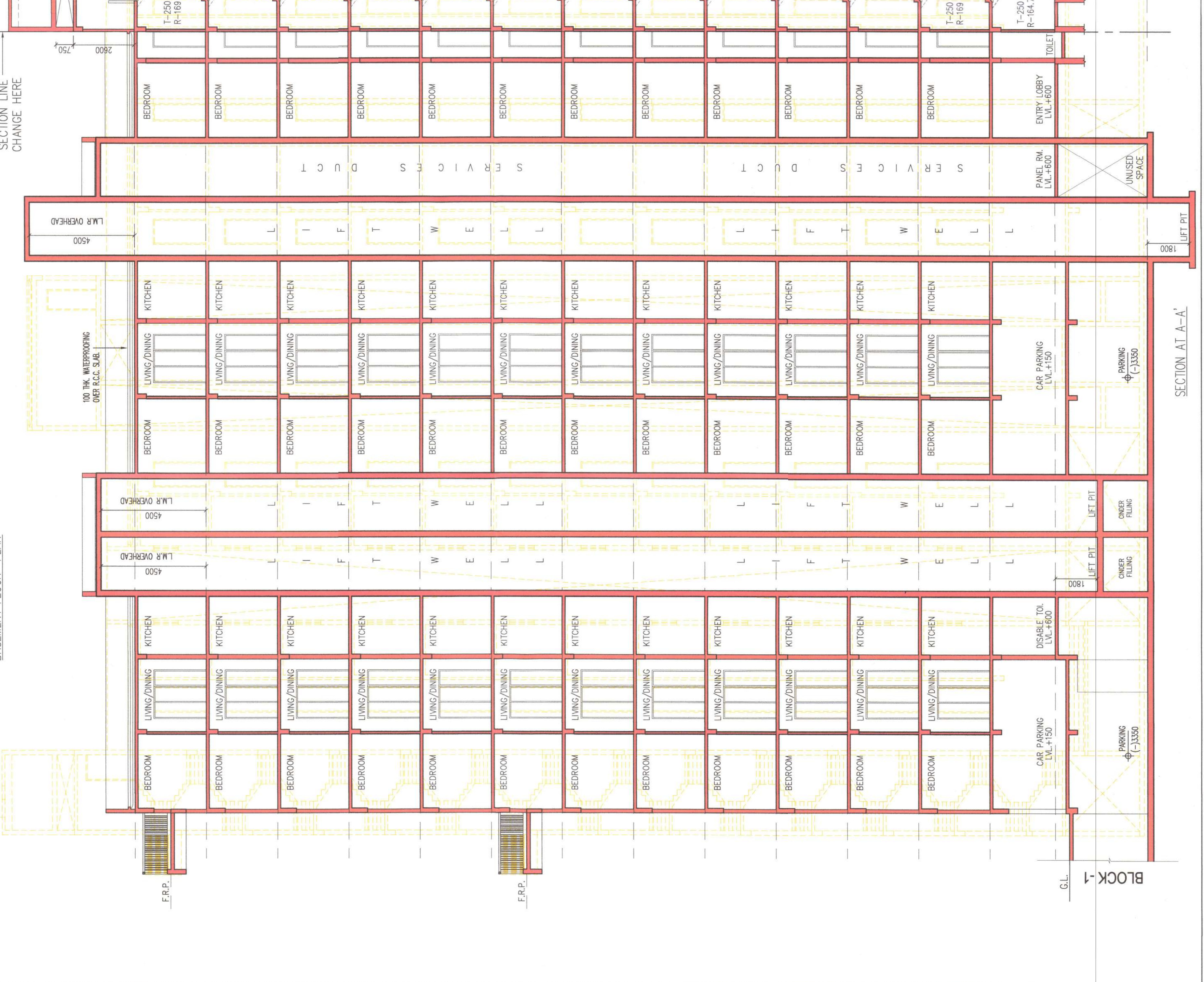
GROUND FLOOR PLAN



BASEMENT FLOOR PLAN



SECTION A-A-B



SECTION A-A-A

